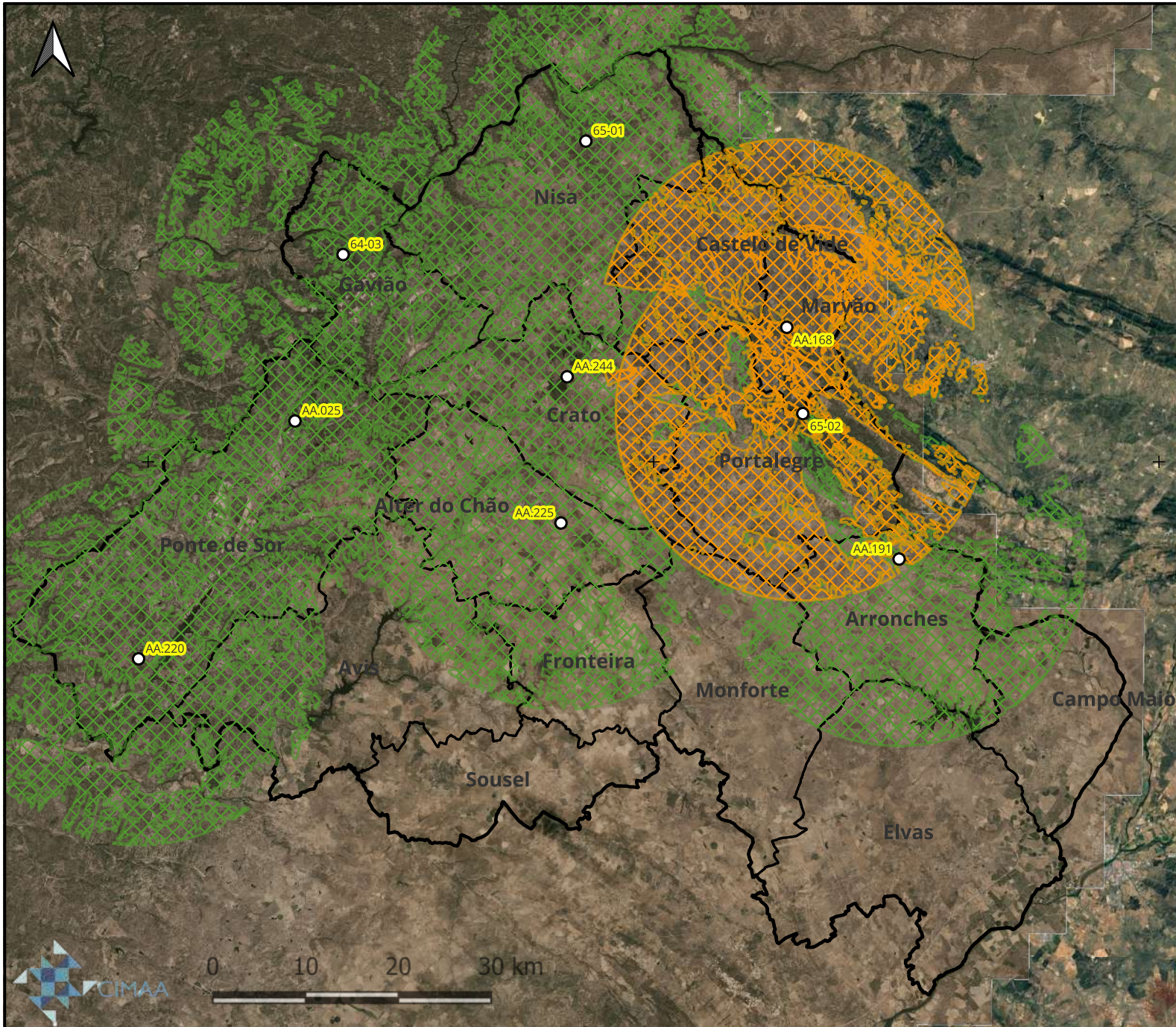


910000.0W

840000.0W

770000.0W

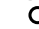






4760000.0N

Rede de Vigilância e Detecção de Incêndios

Sub-Região do Alto Alentejo

Legenda:

-  Identificação dos Postos de Vigia
-  Bacia de Visibilidade- Torres de Videovigilância
-  Bacia de Visibilidade- Postos de Vigia
-  Concelhos da Sub-Região do AA
-  Limite da Sub-Região do AA



Comissão Sub-Regional de Gestão Integrada de Fogos Rurais
 Direção Geral do Território
 Map data ©2015 Google
 © OpenStreetMap contributors, CC-BY-SA

Elaborado

Gabinete Técnico Florestal Intermunicipal

Coordenadas:

EPSG 3763 - ETRS_89 / Portugal TM06