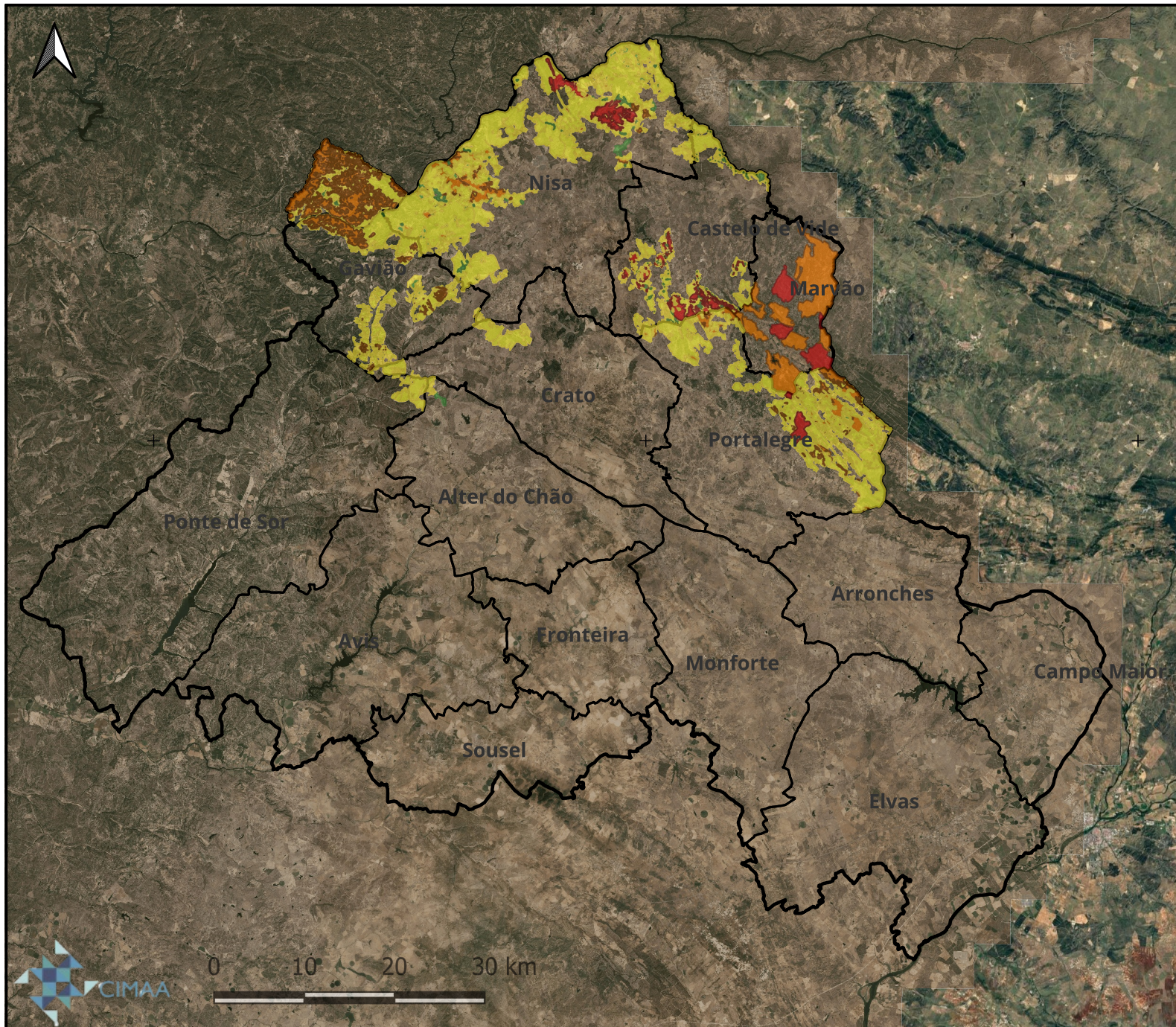


910000.0W

840000.0W

770000.0W

4760000.0N









Áreas Prioritárias de Prevenção e Segurança

Sub-Região do Alto Alentejo

Legenda:

Tipologia de APPS

-  A
-  B
-  C
-  D

-  Concelhos da Sub-Região do AA
-  Limite da Sub-Região do AA



Comissão Sub-Regional de Gestão Integrada de Fogos Rurais
Direção Geral do Território
Map data ©2015 Google
© OpenStreetMap contributors, CC-BY-SA

Elaborado

Gabinete Técnico Florestal Intermunicipal

Coordenadas:

EPSG 3763 - ETRS_89 / Portugal TM06

